



Using biometric  
technology in  
construction

# Today's Agenda

- Introduction to Causeway
- Biometrics in Everyday life
- The Causeway Donseed Ecosystem
- Biometric Identifiers and Software Overview

**Lydia Brand-Williamson**

Solution Sales Specialist

[Lyds.brandwilliamson@causeway.com](mailto:Lyds.brandwilliamson@causeway.com)

# We are Causeway

We are the largest specialist software provider to the UK construction market.

We offer an expanding set of cloud software solutions that span the entire construction life cycle from infrastructure design to cost-planning, bidding and tendering, through to build, trade and property maintenance.



**9 of the  
top 10 UK**  
contractors run on  
Causeway



**8 of the  
top 10 UK**  
house builders run  
on Causeway



**7 of the  
top 10 UK**  
surveyors run  
on Causeway



**9 of the top  
10 UK**  
design consultants  
run on Causeway



**170,000+**  
suppliers on the  
construction world's largest  
connected supply chain  
community

# Biometric Technology



# Biometrics in Everyday life

1 Mobile Payments

2 Online Banking

3 Immigration Services

4 eGov Processes

5 Workforce Management

More than 80% of UK owners of smartphones use their device's biometric verification.

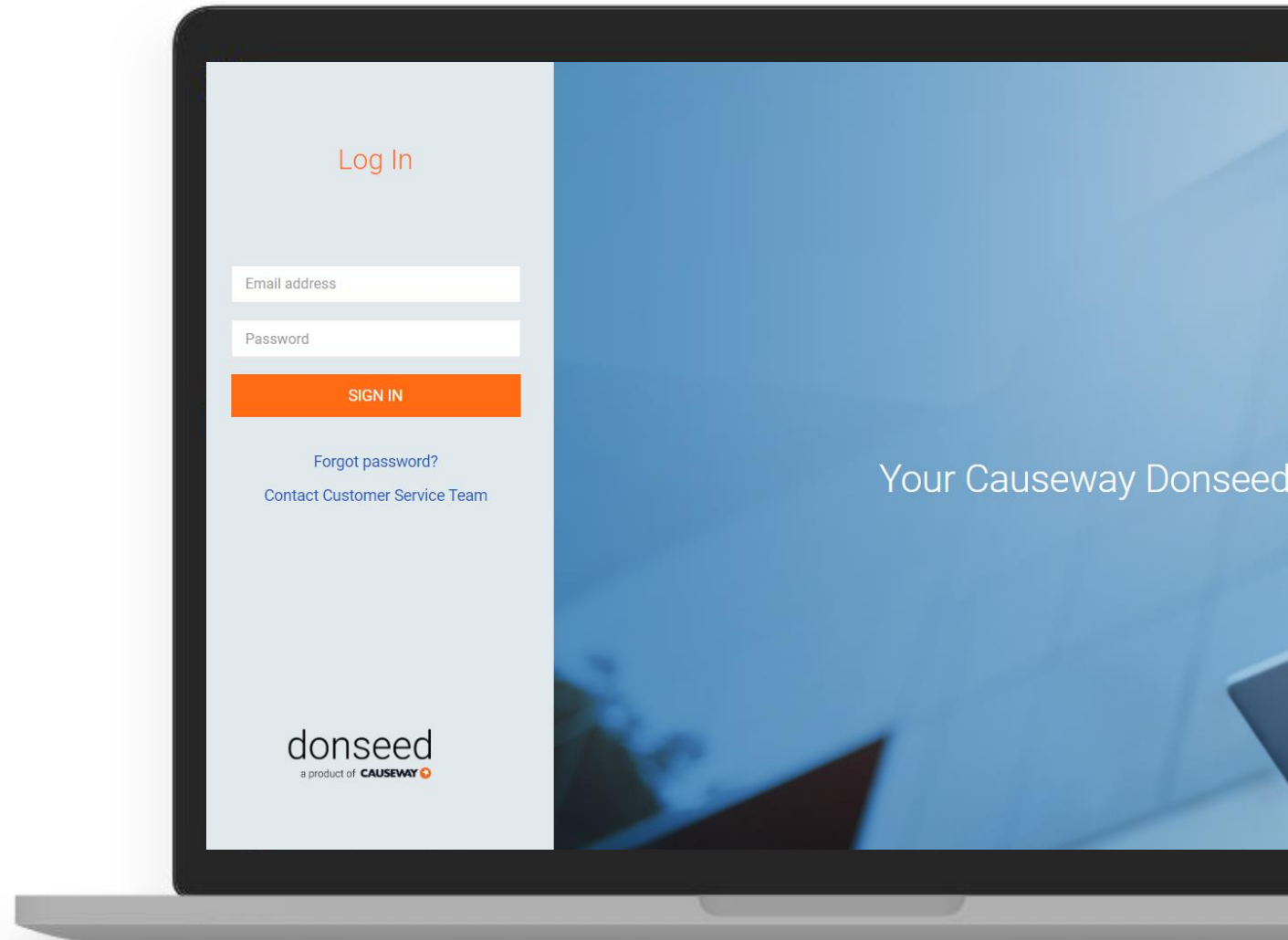
The right people  
In the right place  
At the right time

Integration of biometrics in workforce management helps to eliminate time theft and increases ID accuracy and to boost operational efficiency



# The Causeway Donseed Ecosystem

Our biometric labour management solution utilises **industry-leading biometric identifiers** to provide construction contractors with a truly digital solution to managing their on-site workforce, providing accurate time and attendance, qualification management and much more in **one cloud platform**.



# The Causeway Donseed Ecosystem

Within the Donseed ecosystem you can assign **identity tokens** by individual. These identity tokens determine how individuals on your sites can sign-in.



# The Donseed Ecosystem

Accurate identity of who is really on your sites (a legal requirement)

The capture of accurate T&A to pay your workforce

Access to real-time data to ensure H&S compliance

Manage site access to ensure only authorised personnel on site

Ability to quickly report across the supply chain and spot key trends

A centralised platform to manage training credentials



# Powering Over 200 Construction Contractors

## Groundwork Contractors



## Fit Out Contractors



## M&E Contractors



## Housing Developers



## Specialist Contractors



# Biometric Identifiers

**CAUSEWAY** 

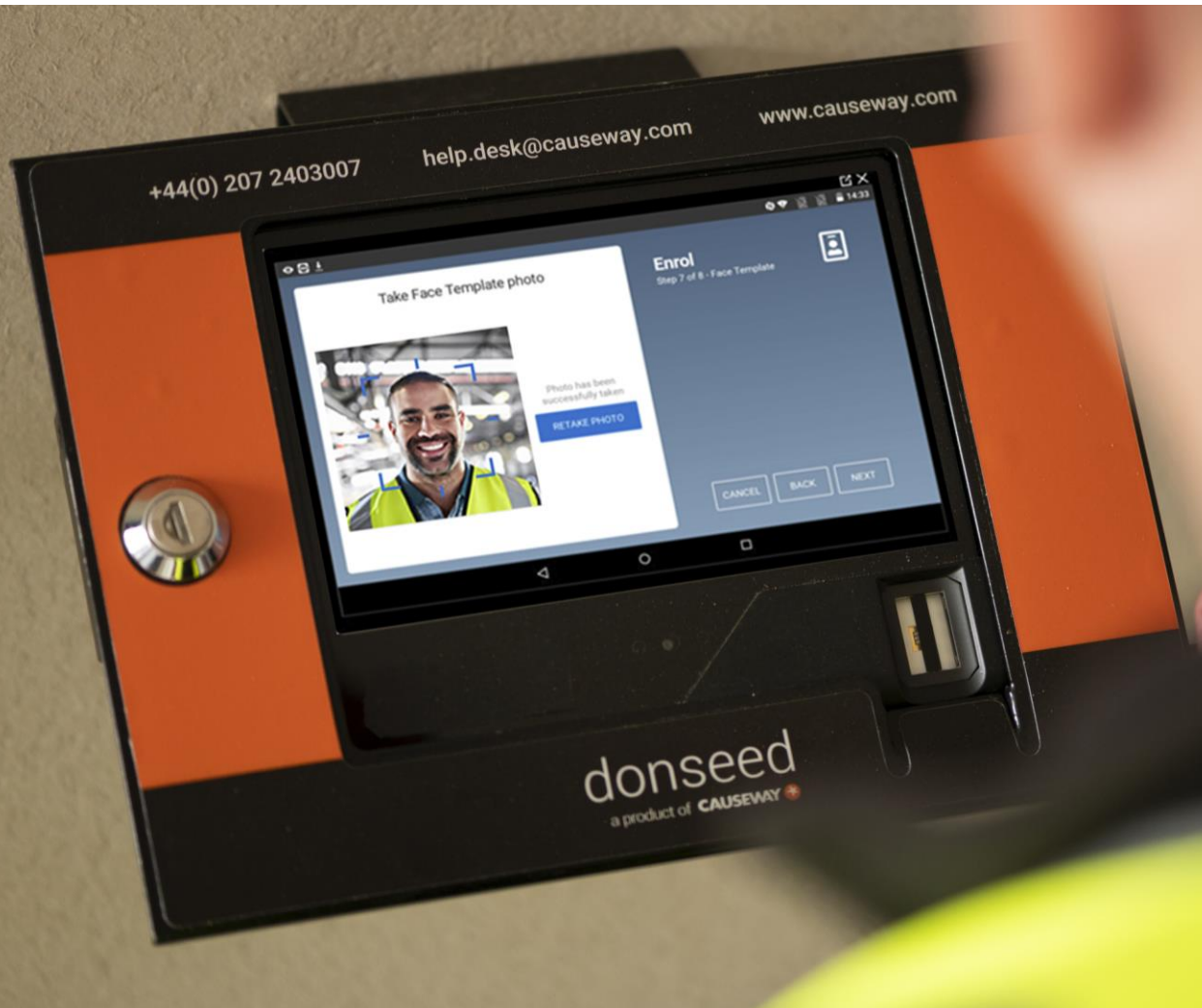
# All-in-One Biometric Device

- A compact touchscreen device with an industry-leading FBI-certified **fingerprint sensor** and built-in contactless **face capture technology**.
- With no hard-wired IT installation required on site, the portable nature of the tablets make this device an ideal identification option for transient construction workforces.
- Tablet supplied in a rugged steel case which can be wall-mounted.





# All-in-One Biometric Device (Facial Recognition)

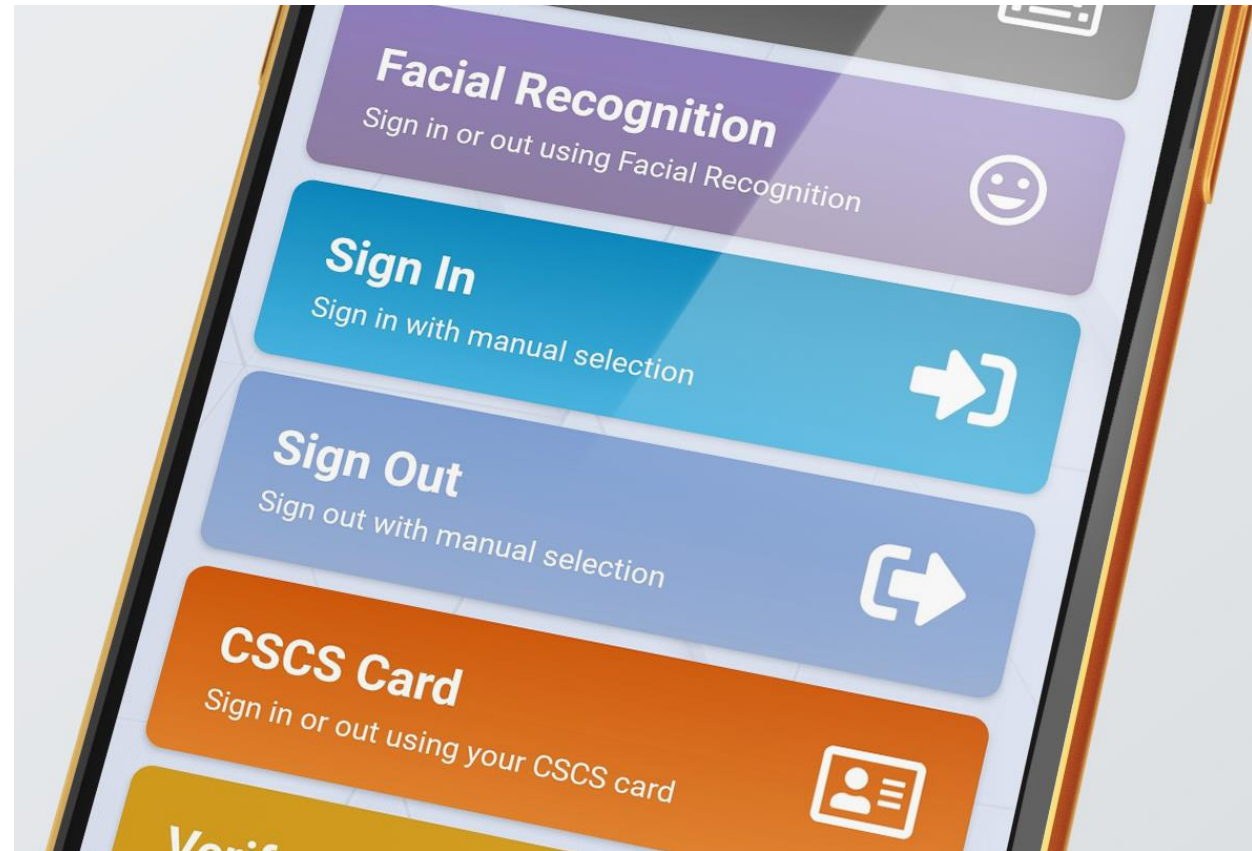


Facial recognition sign-in option:

- Built-in face capture technology
- 1:1 biometric match
- First: scan proximity card
- Second: facial recognition verification

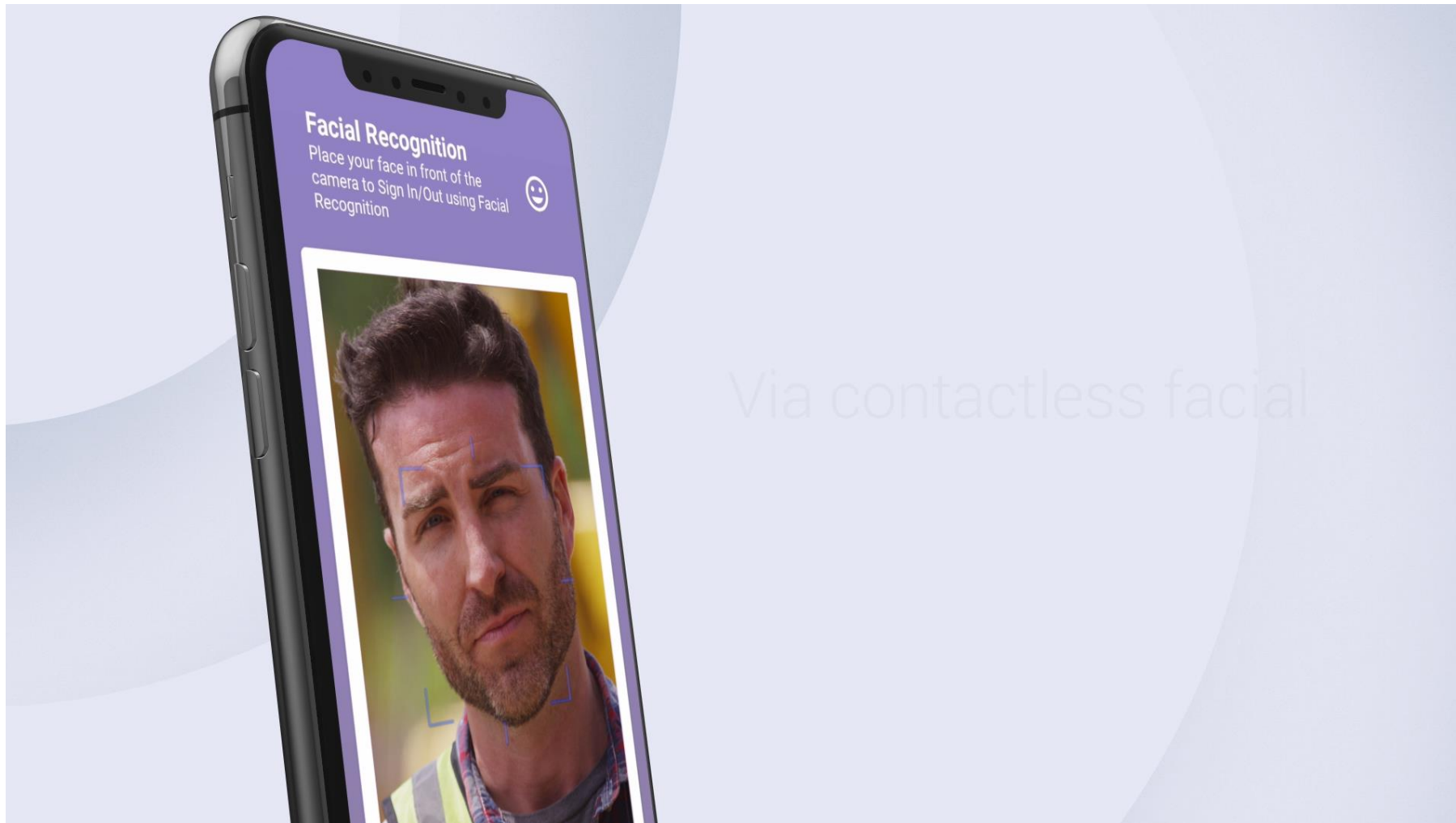
# Mobile App (iOS and Android)

- Downloadable app available on **iOS and Android mobile platforms.**
- Built-in face capture, smartcard verification and GPS technology.





# Example Sign-In

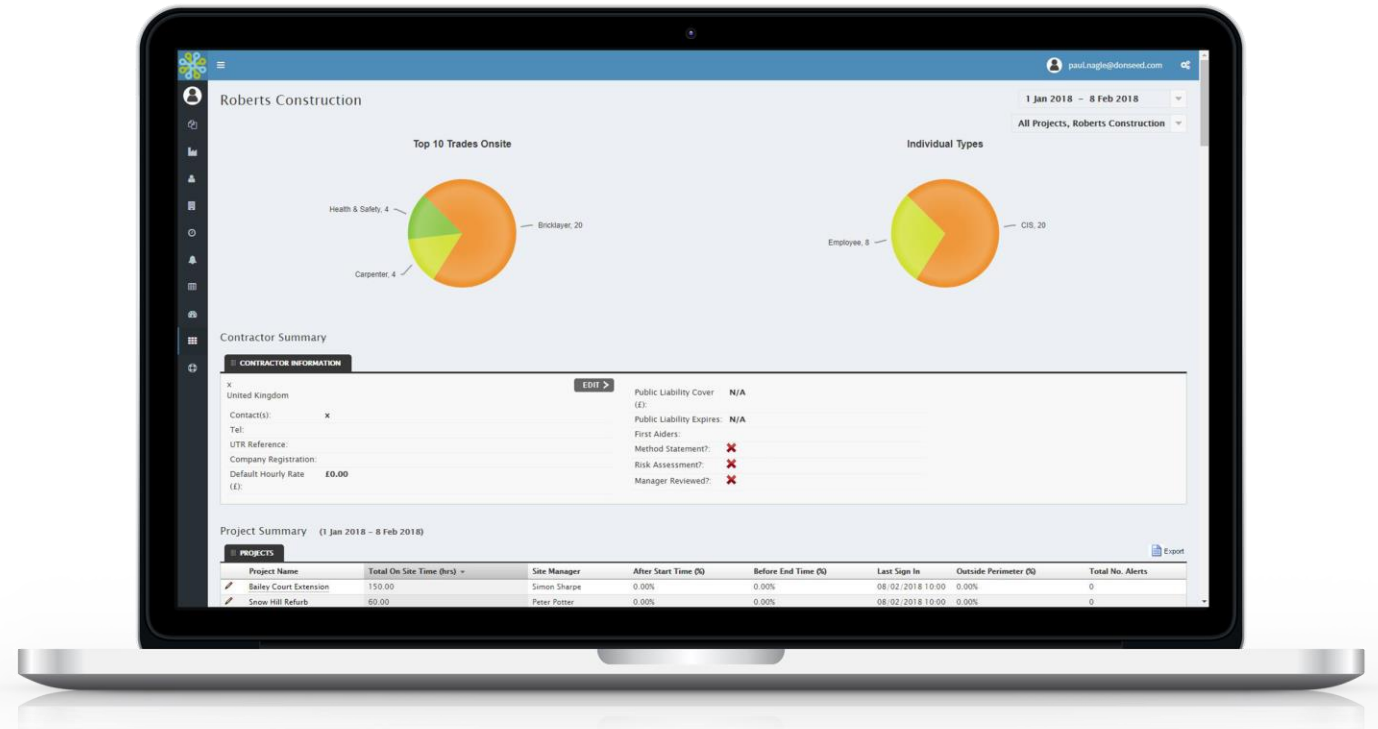


A construction worker wearing a white hard hat, safety glasses, and a high-visibility yellow vest over a black long-sleeved shirt is looking down at a tablet computer. He is standing on a construction site with various pieces of equipment and materials in the background. The scene is brightly lit, suggesting daytime. A blue rectangular overlay is positioned in the upper right corner of the image, containing the text 'Software Overview' in white.

# Software Overview

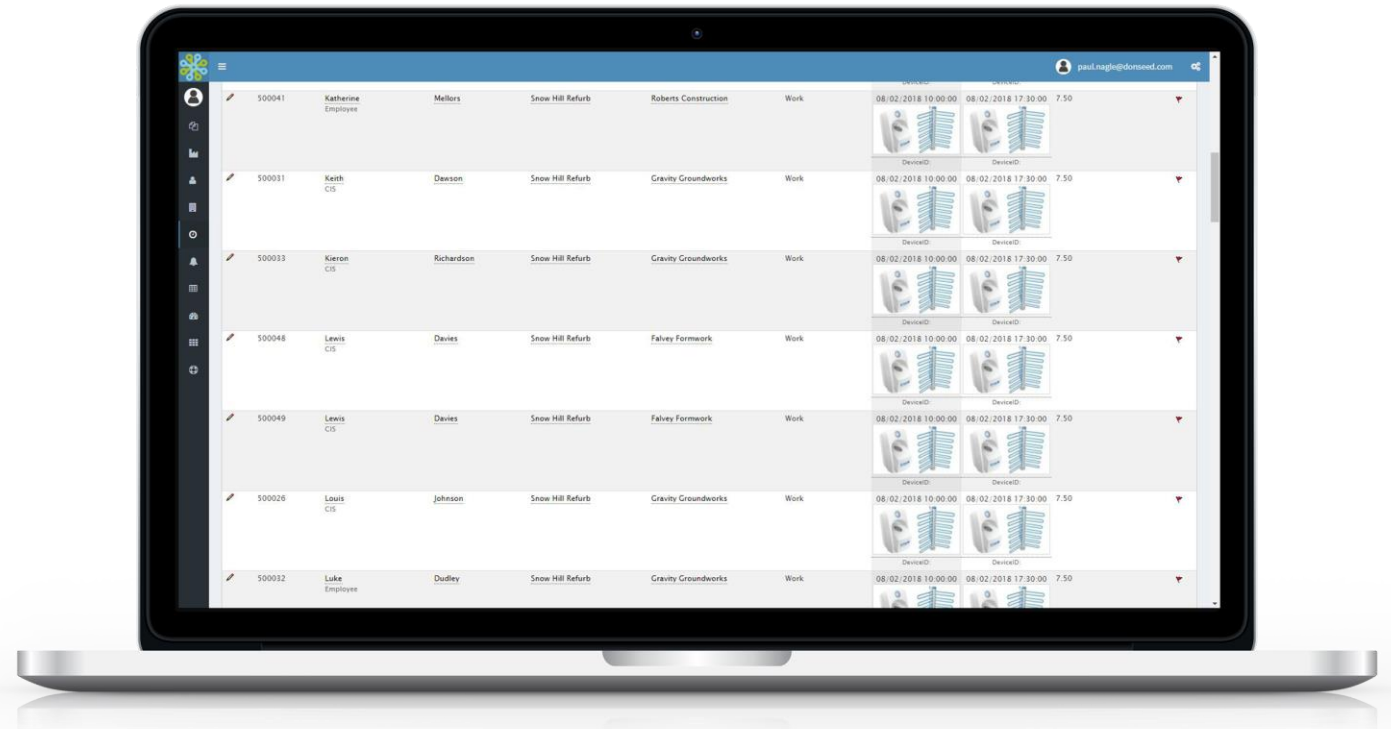
# Cloud-based software modules

- The portal is cloud-based, meaning that your data can be easily accessed via any device with internet access
- Time and attendance is at the core of the solution, but there are a whole host of modules available depending on your specific needs and objectives



# Powerful portal reporting outputs

- System reports can be set-up and scheduled for you and your team to receive on a regular basis e.g. weekly summaries
- Automated compliance alerts can be set-up to help you proactively manage your sites



Thank you  
for listening to  
today's webinar

Solution Sales Specialist  
[Lyds.brandwilliamson@causeway.com](mailto:Lyds.brandwilliamson@causeway.com)